



EVENT REPORT

*Reduce Reuse Recycle Event
Wed 29th October 2025
Kyleakin Hall, Isle of Skye*

CONTENTS

Introduction	2
Torrin Waste Not	2
Event Aims	2
Methodologies	3
Definitions	4
Summary report	5
Key themes:	5
Recommendations	6
PARTICIPANTS	7
The Highland Council Waste Management Services	8
ILM Highland	10
MAPPING	11
IDENTIFYING BARRIERS & CHALLENGES	13
EXPLORING SOLUTIONS	13
APPENDIX 1 EVENT Evaluation	16
APPENDIX 2: Mapping Existing Services	19
APPENDIX 3 Delegates' Comments And Notes	22
APPENDIX 4 Event Programme	25
APPENDIX 5 List of Attendees	25
Credits and Acknowledgements	26

INTRODUCTION

On 29th October 2025 a total of 18 people took part in the Skye & Lochalsh Reduce Reuse Recycle Event. The event at Kyleakin Community Hall was organised and facilitated by Skye and Lochalsh Council for Voluntary Organisations (SLCVO) in collaboration with Rag Tag and Textile. Initially the event was suggested by Rag Tag and Textile in response to the loss of an existing community service – the Waste Not events run regularly in Torrinn since 2021.

A total of 32 direct email invitations were sent out in September to community groups and agencies identified jointly by SLCVO and Rag Tag and Textile. They included key Third Sector groups active in delivering services that are already active in reducing waste, offering recycling opportunities or running projects that support repurposing and re-using of items that would otherwise end up in landfill. Alongside direct email invites, the event was featured on the SLCVO website, the SLCVO Facebook page, in the SLCVO newsletter and blog.

EVENT AIMS

- **To map existing services** – community initiatives, projects and services that help reduce waste
- To highlight some of the **challenges** that Third Sector community groups face when running existing services
- To begin looking at possible ways of addressing these challenges to increase their impact and sustainability.
- To start considering the **barriers** to engagement from an individual's perspective and suggest ways of tackling these barriers to ensure more people actively engage in reducing waste.

TORRIN WASTE NOT

“When we started back in August 2021, we were only planning to do four Wednesdays (on our 'day off' each week) during Skye Climate Feis.....”

Becky and Paul Smith from Torrinn set up weekly Waste Not Wednesdays and winter Waste Not pop-up events, filling the gap between the bin and the charity shops, proving that there is a need for this type of service and providing somewhere for people to exchange items that are too good for the bin and making them available to others.

“Folk often have items that they no longer need and they don't know what to do with it. Waste Not events offered a place for all those useful bits & bobs, spare parts, things that still have life in them but aren't needed in one home will find a home somewhere else.”

The Waste Not events are run entirely by volunteers on an informal basis.

“.. for a range of reasons, we have decided that we are no longer able to sustain the level of voluntary involvement that waste not has required as we have expanded over the years.

Looking into the future we might still do odd events but are stepping back from the weekly events”

Communities can effectively engage in circular solutions by actively participating in the design and implementation processes: -

sharing local knowledge

contributing to decision-making

taking ownership of initiatives

ensuring solutions are relevant, sustainable, and beneficial for everyone involved.

The event was very much seen as a starting point to enable identification of issues and to tap into the expertise, experience and passion of attendees already engaged in delivering, using and promoting a circular economy approach.

METHODOLOGIES

Event Evaluation

Following the event a Survey Monkey feedback form was emailed to all delegates.

- The feedback survey was completed by 10 participants (nearly 60%)

All responses were analysed, and comments noted.

In addition, a total of 4 comments were received by email and these were also added into the analysis.

Analysing Event Engagement

Tabletop sessions offered participants the opportunity to

- Map existing services (54 were identified)

And to consider, discuss and record their thoughts on

- Barriers that prevent individual engagement with reducing, reusing and recycling (16 comments)
- The challenges that community groups face in developing and running sustainable reduce reuse recycle initiatives and services. (20 comments)

Table groups then swapped, with one group choosing one key barrier and the other one key challenge, looking at solutions to address these, and the resources/support needed to make these happen. (this generated a further 48 comments)

There was also an opportunity for people to add comments on wall mounted sheets

- What makes you go AAARGH!!! Share your pet peeves when it comes to recycling, re-using, re-furbishing, repairing or re-purposing (this generated 9 comments)
- If you had funding to develop a new community initiative that helps reduce the amount of rubbish that goes to landfill. This generated 4 project ideas.

In total **151** written notes and comments were gathered during the event. These were recorded on a spreadsheet and common themes and keywords identified across each question heading with the top three most mentioned being

- The need for **partnership working** – this included some practical solutions such as sharing vehicles, but it also included comments on sharing skills and knowledge
- **information/education** - this was a common theme in solutions particularly targeting younger people and the use of influencers
- **Society attitudes and peer pressure**- including comments around consumerism, stigma, lack of time for busy families etc. These comments were mentioned as a barrier to individual engagement but also noted as one of the challenges that any project or service faces.

DEFINITIONS

The event was named 'Reduce Reuse and Recycle' but it is important to note that the intention was to include a wider remit. During discussions, participants were encouraged to think beyond the 3 Rs to include any project, service and community initiatives that contribute in some way towards a circular economy.

This will include partnership working beyond the Third Sector and to this end, small businesses such as The Selkie Collective and crafting enterprises such as Shore to Floor were also involved in the event.

*recycling, reusing
and reducing,
recovering, repairing,
refurbishing,
repurposing and
refusing.*

SUMMARY REPORT

The **Skye and Lochalsh Reduce Reuse and Recycle event** gave an opportunity for those present to network and begin valuable dialogue around several important issues, including the barriers to individual engagement as well as the real-life experiences of the challenges facing many community groups who run existing 'reduce reuse and recycle' services

KEY THEMES:

Communication / Information Sharing

The need for accurate, meaningful and realistic information to encourage and support individual engagement was seen as key. This should include targeted communication with young people who may be feeling disengaged with the idea of recycling, reducing and re-using- as well as with 'harder to reach' groups.

Prioritising

The enormity of the task ahead in moving towards a circular economy was highlighted at the event and it would be easy to get overwhelmed. However, there was clear determination and passion in evidence as well as considerable combined knowledge and experience that can be tapped into. Feedback and comments suggest a strong need to prioritise and to focus on areas where there is a need, a gap or even a relatively simple and 'quick fix' to make improvements.

The Highland Council Waste Management team were able to give context and statistics that suggest focus on:

-

- Food Waste
- Textiles
- Electricals

This accorded with some of the discussions and topics identified throughout the event.

"Would be great to narrow down to a limited number of the most effective or achievable projects - to then decide which and have more time for formulating plans to act upon in the next meeting"

feedback comment

Collaboration

"Most of us share the same challenges but there is a really strong desire to work together towards action"

feedback comment

The event highlighted a strong desire to work better together with more co-ordination of existing services. Throughout the event in the table group discussions and feedback comments there is great value placed on partnership working and collaboration, with a desire to move forward together, share skills, pool experience and spread the load. A collaborative approach would also enable joint working on projects and increase the possibility of securing successful funding bids.

Future events and discussions should also extend beyond those who were able to attend this first event.

Project ideas

The event identified several initial ideas to take forward: -

- The development of a Skye and Lochalsh Reduce Reuse and Recycle directory – to help address the need for more effective information and communication.

There is scope for this to be coordinated by SLCVO in partnership with H&I Climate Hub and Skye Climate Action.

- Developing a more co-ordinated series of pop-up events offering 'swap shop' of preloved items (and building on the experience of Torrin Waste Not) – this would need to be a collaborative project
- PAT testing of electrical items in partnership with ILM (which would be of particular benefit to the charity shops and Lochalsh Reuse and Recycle Hub both of whom sell pre-loved items that include electrical goods.)

RECOMMENDATIONS

SLCVO will work in partnership with Highlands & Islands Climate Hub to:

- establish a working group from event participants (and others) committed to taking things forward
- identify the most suitable structure for a possible Skye and Lochalsh Reduce Reuse Recycle collaboration/partnership

- explore the opportunities afforded by The Highland Council Reuse and Repair fund recently launched to support community groups in defining and developing collaborative project bids.

Recommendations would include:

- a more comprehensive engagement and mapping exercise that will build on the event findings to include the wider community of Skye and Lochalsh (including young people and those harder to reach)
- improved support for community initiatives to design, run and develop services in direct response to identified need
- ensuring that Third Sector run 'reduce reuse recycle' projects align with strategic planning including local action plans, THC Delivery Plan and the Skye and Raasay Future Plan.

PARTICIPANTS

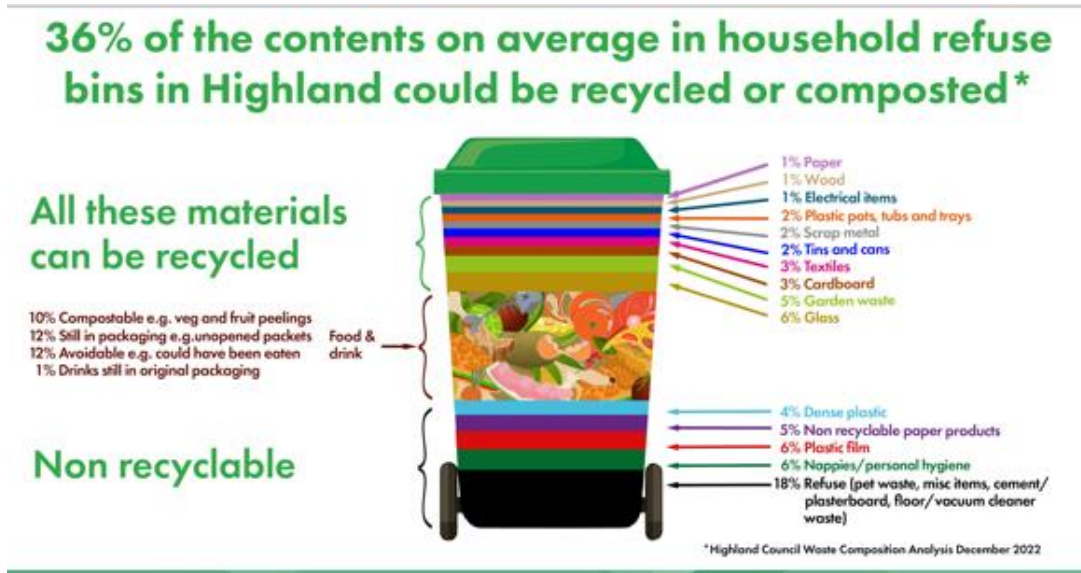
18 people took part in the event including representatives from: -

- **11** Third Sector community groups with experience of running projects that included:-
community shops (offering refill services, a community fridge, preloved items and collection points for specific recycling) workshops that use donated craft items, electrical amnesties and distribution of food parcels. These also included valuable input from the Highlands & Islands Climate Hub, Skye Climate Action and Skye Autism Support Group
- **1** small business dedicated to reducing waste by offering a refill service and ethical choices
- **1** statutory agency



The Torrin Waste Not representatives, Am Fasgadh Furniture Project and Broadford & Strath Community Company were unable to attend but discussion topics were emailed to them to offer the opportunity of adding their valuable input.

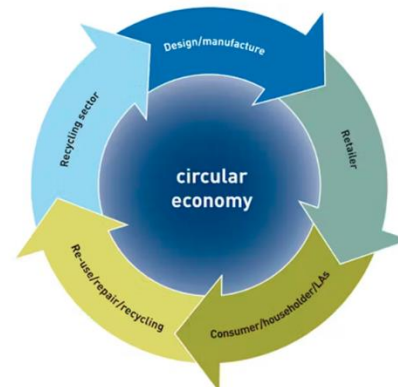
The event began with an informative presentation by Imogen Percy-Bell Principal Waste Management Officer with The Highland Council.



Key points: -

- The Highland Council was awarded £7.1 million funding from The Scottish Government's Recycling Improvement Fund to expand and enhance the recycling services for communities across the region. This has gone towards the region wide roll out of the new household collection services for separate recycling of paper/cardboard and plastics/tins.
- THC have now completed the region wide roll out with each household now having the new three bin system. The talk included a handy reminder of what can and can't be added to each.
- In Highland the average household is still putting too much into the 'general waste' (grey) bin with 36% of content that could be recycled or composted including food and drink items still in their packaging.
- Putting things in the wrong bins leads to contamination which affects the effectiveness of the recycling and adds to general waste.
- Household collection is now all processed within Scotland
 - paper/card going to a plant in Glasgow
 - plastics & tins going to Perthshire's Wyllie Recycling
 - general waste goes to Viridor's Energy Recovery Facility in Dunbar who treat the waste to generate electricity for the national grid which means that the Highland region is ahead of the landfill ban.
- The bigger picture: - Scotland has set an ambitious target to achieve net zero by 2045 to tackle the global climate emergency.

- Net Zero means balancing the amount of greenhouse gas that's produced & the amount that's removed from the atmosphere, through a combination of emission reduction & emission removal.
- **Recycling & circular economy practices play an important role in achieving net-zero targets**, they bring us easy ways to reduce resource consumption & minimise waste & therefore reduce emissions.
- What we want to achieve is a circular economy – there is a long way to go but there are areas to work on that will help – specifically food waste, electrical waste and textiles.



- **Food Waste** Too much is going in the bin! Food and drink accounts for 36% of the waste found in non-recyclable waste bins in Highland. To enable a household food waste collection service would require specific containers and 48hour removal – it is not cost effective for rural areas.
- **Electricals** - 'Fast tech' small 'cheap to buy' electrical items are the fastest growing area of waste and cause for concern. The talk highlighted THC partnership with ILM Highland and the 'electrical amnesty' pick up service (Kyleakin and Sconser. Some electrical waste will be repairable – others can be stripped, for valuable commodities such as copper
- **Textiles** THC used to send textile waste to a company in Stirling for shipment to Africa but for various reasons this has now ceased – leaving a big gap to fill.

Looking forward: -

- **Funding** - a £500K challenge fund for communities will help with setting up specific projects or schemes to reduce non-recyclable waste, increase repair, reuse and upcycling.
- THC are working with **Zero Waste Scotland** on a new Reuse Best Practice Guidance Document for Scotland Local Authorities
- THC will focus on communications and engagement to help the public change their relationship with waste



Ruth Crombie from ILM Highland gave an informative overview of ILM and their services.

Based in Alness, ILM is a registered charity, and company limited by guarantee first established in 1994. They operate as a social enterprise.

Caring for People, Place & Planet ILM Highland's mission is to deliver services that support people place and planet throughout the Highlands. They see themselves not just as a service provider but as a force for positive change.

Compliance – ILM is a fully licensed Approved Authorised Treatment Facility (AATF). They are regulated by SEPA and comply with WEEE Directive 2007 which enables them to treat and recycle all categories of WEEE safely and responsibly.

The run the **WEEE recycling and reuse service** across the Highlands working with compliance schemes, THC and businesses. Each year they handle 55,000 units and divert 2,500 tonnes from landfill. They secured funding from Zero Waste Scotland and Material Focus to install 21 recycling banks in most rural areas of the Highland and run 12 amnesty events on a monthly basis for people to deposit small electrical items – estimating that this saves a further 170 tonnes a year going to landfill.

*WEEE stands for **Waste Electrical and Electronic Equipment**. It refers to any electrical or electronic item that is discarded and destined for disposal, including items that are whole or broken*

Repair Shop Donated white goods that are in good condition are made available for sale via the onsite Repair Shop or online ILM shop. They deliver and collect throughout the Highlands This is made possible through their contract with THC and the Compliance Scheme Ecogenesys (an approved compliance scheme for Waste Electrical and Electronic Equipment (WEEE), Batteries, and Packaging).

Repair Café last Saturday of every month – run with volunteers who come together and share skills with the community – repairing not just electrical items but also sewing & knitting,

They also run **Care & Repair** and **Handyperson services** in Ross-shire and Sutherland. *In Skye and Lochalsh, the Care & Repair and Handyperson services are managed by Lochalsh & Skye Housing Association (in partnership with NHS Highland and The Highland Council).*

MAPPING

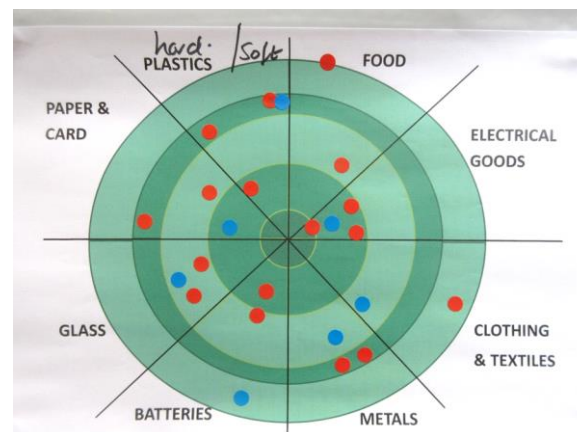
Participants were asked to note down existing services, projects, one off events, and community initiatives.

This exercise identified **45** different services including:

- Repurposing projects such as **Am Fasgadh Furniture project** making donated furniture and household items available to those in need
- Community allotments and growing projects such as the **Growing Hub** run by Broadford and Strath Community Company
- **Charity Shops** (of which there are 6 in Skye and Lochalsh) raising valuable funds for good causes - offering a wide range of donated clothing, books, household items etc for sale
- **Pop up community events** such as those organised by **Waste Not on Tour** in South Skye and Lochalsh or by **Dunvegan Community Café** for swapping clothes, books and toys
- Community Shops such as **Armada Stores** run by Sleat Community Trust which offers refilling as well as providing a collection point for blister packs and batteries
- **small businesses** such as The Selkie Collective which is based on ethical values and a passion for sustainability – offering refill options and wholefoods
- **crafting enterprises** such as Shore to Floor making mats from discarded fishing ropes.

HOW WELL ARE WE DOING IN SKYE & LOCHALSH?

As a rough guide to how well participants think we are doing in Skye and Lochalsh in reducing reusing and recycling a 'dartboard' method was used. A 2D dartboard was divided into segments labelled with the different types of materials/products eg plastics, metals, food, clothing etc and participants invited to add a sticky dot to indicate their rating for each – the better they thought we are doing the nearer the bullseye they placed their sticky dot.



Whilst only a snapshot of personal views of those in the room, this indicated that participants think that on the whole Skye and Lochalsh is doing best in recycling electrical items, glass and hard plastics and doing less well at tackling soft plastics, metals and clothing. Participants were split on how well they think we are doing at recycling batteries and food waste in Skye and Lochalsh.

- **House collection** recycling options offered by The Highland Council (for paper & cardboard, plastic and tins)
- **Bottle banks** for glass recycling
- **Supermarket collection points** for soft plastics and batteries
- **Charity options** based elsewhere offering postal access such as Smalls for All which sends underwear to Africa and **print cartridge manufacturers** that accept used ink cartridges
- **Electrical recycling** and repairing services offered by the Highland wide charity ILM in partnership with The Highland Council and local volunteers

See Appendix 2 for full Mapping list

Discussion following the mapping exercise highlighted several key themes for further exploration:

- many services and community initiatives are very localised
- knowledge is not shared well across the area
- people need clear guidelines on what can be recycled or repurposed– and where.
- a directory of services could broaden awareness and encourage individual engagement



IDENTIFYING BARRIERS & CHALLENGES

Tabletop discussions

- considered the issues that prevent individuals from engaging with the whole idea of reducing waste – the barriers.
- looked at the challenges that communities face in planning, developing and running projects and initiatives that help contribute towards a circular economy.

Summary of CHALLENGES that community groups face when developing /running a project that helps reduce waste		Summary of BARRIERS that prevent individual engagement	
LEGISLATION Legal compliance	SAFETY ISSUES & RISKS	LACK OF INFORMATION Need for accurate and positive information	LACK OF TIME For busy families it's hard to prioritise
RECRUITMENT Need for volunteers	SOCIETY BEHAVIOUR & DISPOSABLE CULTURE Hard to change people's behaviour	LACK OF UNDERSTANDING About individual contribution to the bigger picture	COSTS Cheaper and often more convenient to buy online or from supermarket
FUNDING Including running costs	PRACTICALITIES Need a central, affordable and accessible space	DEMOGRAPHICS Differing attitudes amongst younger people vs older people	STIGMA Second hand is perceived as poorer quality
RURAL CHALLENGES Distances and costs	LACK OF COHESIVE NETWORK Not enough collaboration at present	ACCESS Lack of transport Some people find accessing services harder than others	CONSUMERISM Society behaviour peer pressure Disposable income Easier to buy new
		HUMAN NATURE Laziness – the easiest option wins out	

EXPLORING SOLUTIONS

Two of the table groups then focused on ONE barrier to individual engagement. Both tables chose Information and looked at identifying solutions – *how do we get the message across.*

Making it easier for individuals to engage in waste reduction – improving communications

<p>Communication tools</p> <p>Social media</p> <p>Local radio and newspaper</p> <p>Leaflets</p> <p>Community newsletters</p> <p>A dedicated website</p>	<p>Targeted Engagement</p> <p>Youth engagement</p> <p>a dedicated Engagement Officer</p>	<p>Community Events & Talks</p> <p>To promote provide accurate information with a positive message.</p>
<p>Local Champions</p> <p>influencers to target young</p> <p>real life experiences</p> <p>talks from 'local heroes'</p>	<p>Education</p> <p>Links with school and curriculum</p>	<p>Networking</p> <p>With organisations and businesses</p>

Ways to support Third Sector community groups running circular economy projects

1. **STIGMA:** - One table group chose to look at what it might take to address the issues surrounding **stigma** which was identified both as a barrier to individuals but also as a challenge that communities face when developing and running a community project or service that helps reduce waste.

<p>Communication & Education</p> <p>Showing positives and benefits</p> <p>Showing Real Life Experiences</p> <p>Using influencers</p> <p>Having key members of community championing</p>	<p>Partnership Working</p> <p>with The Highland Council with other agencies and with other groups</p>
--	--

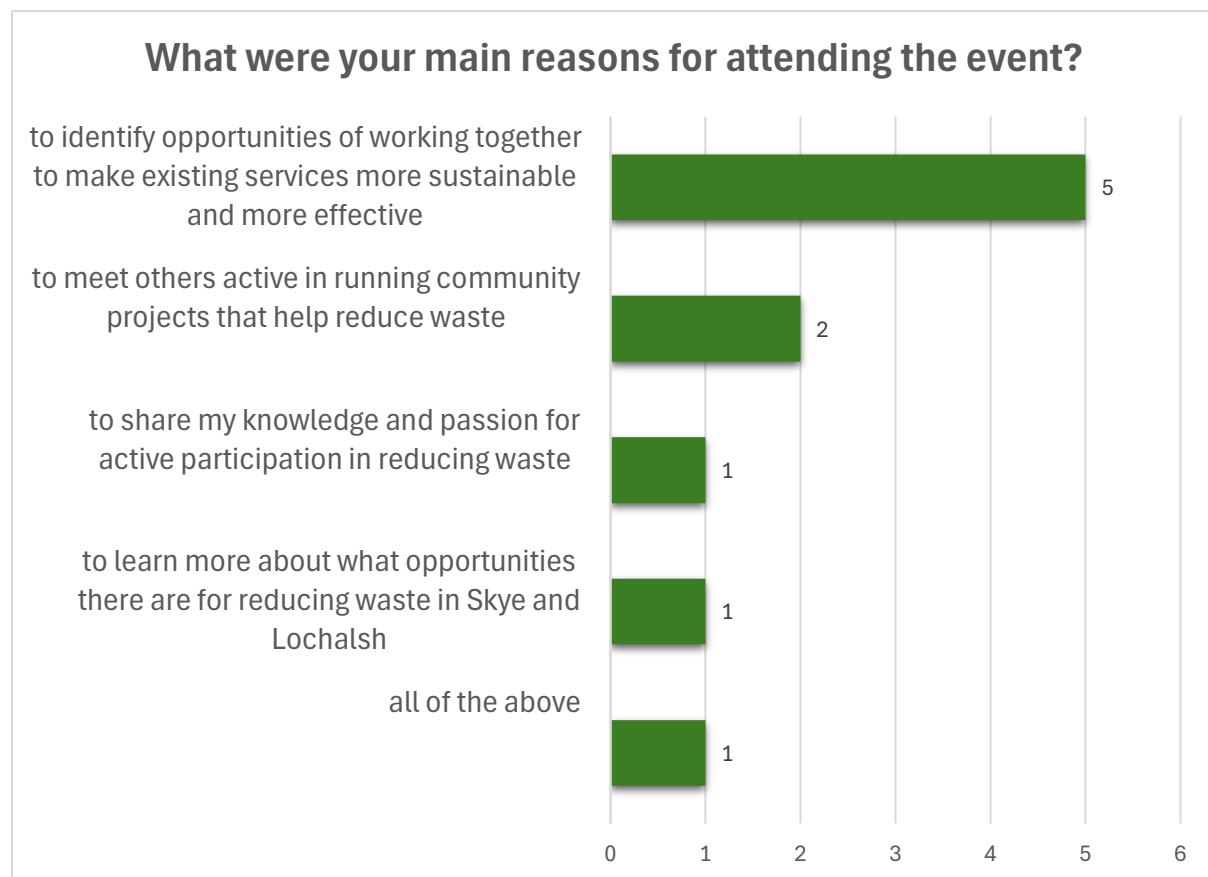
2. **STORAGE SPACE** The more practical challenge of **storage** was explored by one table group who explored ways of addressing this to make it easier for communities to develop and run a project that supports reducing, reusing and recycling aims.



Their focus was very much on sharing and partnership working and pop-up events.

APPENDIX 1 EVENT EVALUATION

A total of **10** feedback forms were completed representing the views of **55.5%** of participants in the event.



50% of the respondents said that their main reason for attending was to **Identify opportunities of working together to make existing services more sustainable and effective**

Feedback revealed a high level of satisfaction with the different aspects of the event with most people confirming that they found things very useful – particularly the opportunity for networking, expanding knowledge and awareness of local projects and looking at solutions that will help the development of new or existing projects.

My knowledge of local recycling opportunities in Skye and Lochalsh has greatly increased

- **60%** agree
- **40%** somewhat agree

Which parts of the event did you find most useful



The majority of participants completing the feedback form indicated that most parts of the event were **very useful** or **somewhat useful** with networking and raising awareness of what is happening locally in terms of reducing, recycling and reusing rating the highest.

“It was good to talk through issues, to learn from others and to see issues and potential solutions from some different perspectives”

- **50%** of those completing the feedback form said that the event **exceeded their expectations**
- **40%** said it **met their expectations**
- **1** person felt that it had **not met their expectations**

“Thanks very much for organising. We need things like this to get individuals, groups, communities and businesses pooling their knowledge and experiences”

When asked what they had learned from the event those completing the feedback said: -

That most of us share the same challenges but there is a really strong desire to work together towards action.

That we have a lot of common goals and a wish to tackle them together networking with similar minded people

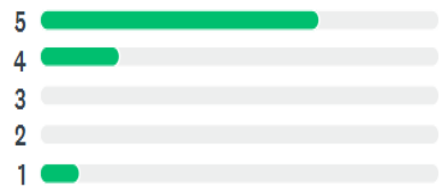
The priorities for improving circular economy locally.

I had no idea how many different organisations were working to reduce waste on Skye.

How would you rate the overall event?

There was a high level of satisfaction with the event and an overall average rating of 4.4 out of 5-star (Excellent) rating from feedback respondents

★ 4.4/5
Average Rating



“I think we were only constrained by the amount of time we had but look forward to further meetings/discussions and positive actions and projects that will from this group, enhanced by other individuals, organisations and businesses already working towards the objective of sustainability”

APPENDIX 2: Mapping Existing Services

The Highland Council Waste Management Services	household collections	plastics and tins	Highland wide
		card and paper	Highland wide
		general waste	Highland wide
	bulky item collection		Highland wide
	glass recycling collection points	glass	Highland wide
	textile recycling collection points	clothing	Highland wide
	Recycling centre	General waste Card & paper / Glass / Electricals	Portree
Charity Shops	Crossroads Care Skye and Lochalsh		Portree
	Blythswood		Portree and Broadford
	Highland Hospice		Portree
Rag Tag and Textile	Charity Shop	various	Broadford
	garden	veg and plants	Broadford
	workshops	craft supplies	Broadford
	one off events	various	Broadford and South Skye
Broadford & Strath Community Company	Refill Skye project		Broadford
	Growers Hub	compost	Broadford
	Community Fridge (currently paused)	food	Broadford
South Skye Men's Shed	South Skye Men's Shed	Wood – repurposing upcycling and reusing	South Skye
	Armada Stores	food	Sleat

Sleat Community Trust		blister packs (medical)	Sleat
		refill service	Sleat
ILM	electrical amnesty	electrical goods	Scheduled Pick-ups at Sconser and Kyleakin
Dunvegan Christian Fellowship DCF Community Café	Community Swap Shop events	clothing and other pre-loved items for exchange/sale	Dunvegan area
	Community Fridge	Collection point for Skye and Lochalsh Food bank	
Dunvegan Community Trust	Tool Library	Sharing tools	Dunvegan area
Am Fasgadh (Skye and Lochalsh Mental Health Association)	Furniture Project	furniture for those in need / upcycling project	Based in Portree but covers Skye & Lochalsh
Portree & Braes Community Trust	Portree allotments	Growing food / composting food waste	Portree
Co-op Supermarkets	collection points	Batteries soft plastics	Portree Broadford Kyle
Kyle and Lochalsh Community Trust	Lochalsh Reuse and Recycle Hub	various	Kyle of Lochalsh
	Community Fridge - Lochalsh Reuse and Recycle Hub	food	Kyle of Lochalsh
	Achmore Repair Café	various	Lochalsh
TerraCycle	Collection point for hard to recycle items	specific items	Lochcarron
Skye and Lochalsh Community Foodbank	Distributed via Skye and Lochalsh Citizens Advice Bureau	new food items – packaged, tins etc and essential	Based Portree but covers Skye and Lochalsh

		household items incl toiletries	
OTHER	social media groups	For exchange and sale of preloved items	Skye and Lochalsh
	Opticians	glasses	Portree
	Smalls for All	Underwear (sent to Africa)	by post
	RNIB	stamps	
	Vets	towels	Broadford Portree
	Skye Environmental Centre (International Otter Survival Fund)	towels	Broadford
SMALL BUSINESSES	Shore to Floor (small business	Makes mats and other items from discarded rope off beach	Skye and Lochalsh
	Selkie Collective	Refill service/bulk items/ethical goods	Based in Broadford
	Marys Chairs	furniture upcycling	Based in South Skye
	Crafters including potteries such as Sarah Wiggins Ceramics	Bubble wrap	Skye and Lochalsh

APPENDIX 3 Delegates' Comments And Notes

Table Group Discussion:- **What barriers do individuals in Skye and Lochalsh face in making an ethical choice to reduce reuse or recycle?** *What stops them from using existing services?*

Lack of info	Lack of transport	Costs – no financial incentive	Peer pressure & consumerism	Geographic location
Lack of education	Incorrect information	Low priority	Stigma of using second hand	
Lethargy	Lack if information and understanding	Demographics – young inclined to think what's the point	Lack of storage in house	
Laziness	Inconvenience	Disabilities	Thinking 2 nd hand is poor quality	

Table Group Discussion:- **What challenges do community groups face in developing and delivering services that help reduce the amount of rubbish that goes to landfill?**

legislation	Safety & legal compliance	time	Lack of volunteers	Lack of skills
space	funding	Venue / storage	Lack of central location	Waste expertise
networking	rurality	Changing society behaviour	Disposal society	Circularity of design
Running costs	Built in 'end of life' of products	Research/knowledge around techniques	money	
Not knowing what waste streams to prioritise to achieve impact/change		Not enough collaboration		

Table Group Discussion:- **Addressing the BARRIER to Individual Engagement: - Lack of information**

Solutions		Support/Resources needed	
Social media groups	Influencers	Technical skills	Funding
Youth engagement	leaflets	volunteers	Lobbying support
Community events	Education-curriculum	skills	funding
WHFP	ECHO	time	Central base
Website with regular updates	Organisations & Businesses	continuity	Room to hold items that is accessible & affordable and not damp
Social media - Facebook	Going into schools ~& groups	Regular meetings	Social policy
Paid engagement officer			

Table Group Discussion:- **Addressing the CHALLENGE facing community groups : Combating STIGMA**

Solutions		Support/Resources Needed	
education	Influencers	Money	funding
Showing the positives & benefits	Sharing best practise	partnerships	Leaflet/radio campaigns (national and local)
Key members of community championing	Real life examples	networking	
Working in partnership e.g. ILM and THC			

Table Group Discussion:- **Addressing the CHALLENGE facing community groups:-
STORAGE SPACE**

Solutions

Sharing space with others MAKING new space available

Volunteer recruitment Pop up events

Individual charity shops specialise in certain items

Support/Resources Needed

Connect people together One group provides the space the other group provides manpower

Sharing vehicles

Advertising campaigns

Communication and partnership working

On the Wall: - **What makes you go AAARGH!!! Share your pet peeves when it comes to recycling, re-using, re-furbishing, repairing or re-purposing**



Tourism specific eg bedding – info for local recycling initiatives/incentives

Red tape for community initiatives

People using charity shops as dumps for rubbish

Lack of recycling facilities and litter bins for tourists

Overbuying food/appliances/clothing/tools

Soft plastics – there MUST be a better way!

Online shopping

Amount of plastic & other materials used for packaging

Time – we need easy to access options for busy families

On the Wall: - **If you had funding to develop a new community initiative that helps reduce the amount of rubbish that goes to landfill....**

Waste Not in some form in Broadford Portree or Kyle run by 2 organisers (paid) and a large team of volunteers

Linking up food surpluses & clothing suppliers with people in need – involve social work

Educating communities to avoid food waste and save money – go into schools & Teach cooking!

Central base for items too good for landfill & not donated to charity shops that can be upcycled & repaired to teach new skills

APPENDIX 4 EVENT PROGRAMME

12:00-10:15 Registration **12:15-12:30** Welcome & Introduction –SLCVO

12:30-13:15 *The Highland Council Waste Management* Imogen Percy-Bell

13:15-14:00 *Lunch – with opportunity to add comments to wall questions including pet peeves and project ideas*

14:00-14:45 *Table group discussions*

- *Mapping existing opportunities for recycling, reusing and reducing waste.*
- *Exploring Barriers to individual engagement*
- *Exploring Challenges facing Third Sector delivery*
- *Choosing one barrier and one challenge and identifying possible solutions and what resources/support would be needed to make these happen.*

14:50-15:00 *what happens next – discussion and summary SLCVO.*

APPENDIX 5 LIST OF ATTENDEES

Bryony Anderson
Dunvegan Community Trust

Jessica Broughton
Kyle and Lochalsh Community Trust

Ruth Crombie
ILM Highland

Emma Dallorzo
Rag Tag and Textile

Matt Davis
Skye and Lochalsh Befrienders (SLCVO)

Catherine de Vries
Armada Stores (Sleat Community Trust)

Dorothy Jackson
Skye Climate Action

Katy Lawrence
Highland & Islands Climate Hub

Helynn MacLeod
Rag Tag and Textile

Grace McCulloch
Lochalsh Reuse Recycle Hub (Kyle and Lochalsh Communities Trust)

Patricia Petrie Clark
Skye Climate Action

Alistair Rogerson
Skye & Lochalsh Citizens Advice Bureau

Michelle Seviour
SLCVO

Gill Terry
Rag Tag and Textile

Stuart Wales
Skye Autism Support Group

Public sector attendees

Alison Boyle **The Highland Council**
Imogen Percy-Bell **The Highland Council**

Private Sector Attendees

Amy Bentall **The Selkie**
Collective

CREDITS AND ACKNOWLEDGEMENTS

Skye and Lochalsh Council for Voluntary Organisations would like to thank

- Rag Tag and Textile for suggesting this event and working alongside SLCVO to make it happen
- Each one of the participants for their passion and commitment to taking this forward.
- Mollys Meals for providing lunches
- Everyone who helped with setting up, washing up, clearing up 😊

Skye and Lochalsh Council for Voluntary Organisations
Tigh Lisigarry, Bridge Road, Portree Isle of Skye IV51 9ER

Tel 01478 612921

www.slcvo.org.uk www.facebook.com/SLCVO

10 Nov 2025