

# Skye & Lochalsh Health, Wellbeing, Welfare and Social Care Collaboration



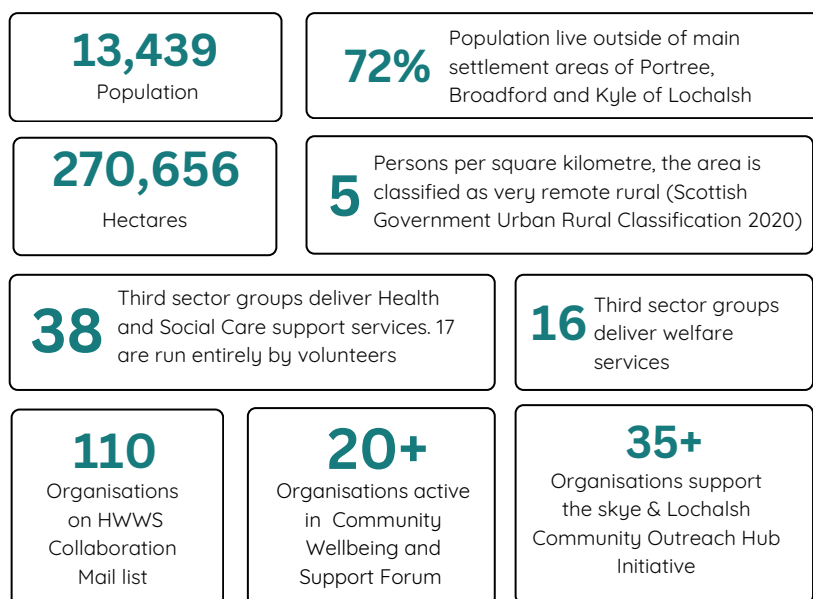
Established in 2024 under SLCVO's Empower Skye and Lochalsh programme, the S&L HWWS Collaboration is a strategic platform to strengthen third-sector health, wellbeing, welfare, and social care services across the region

## Structure of the HWWS Collaboration

The S&L HWWS Collaboration is built around three core components that work together to deliver the Skye & Lochalsh Caring Communities Plan:

- **The Steering Group** provides strategic direction, governance, and oversight of the plan. It monitors progress, ensures accountability, and fosters collaboration across third-sector organisations.
- **The Community Wellbeing and Support Forum** is an open network of local groups, public sector partners, and individuals. It facilitates engagement, encourages idea generation, and helps identify emerging needs while amplifying rural voices in service planning.
- **Skye and Lochalsh Council for Voluntary Organisations** (SLCVO) manages the delivery programme, coordinates operational activity, and provides shared resources to support the implementation of priority actions.

## Skye & Lochalsh HWWS Environment



## Steering Group Members

- Skye and Lochalsh Mental Health Association
- Counselling Care Skye & Lochalsh
- Rag Tag and Textiles
- Alzheimer Scotland Skye & Lochalsh Services
- Crossroads Care Skye & Lochalsh
- Kyleakin Connections
- Skye and Lochalsh Community Care Forum (Young Carers)
- Viewfield Garden Collective
- Skye & Lochalsh Council for Voluntary Organisations

# What is the S&L HWWS Collaboration?

It is a framework for change that:

- Supports collaboration in the delivery of health, wellbeing, welfare and social care services in Skye and Lochalsh.
- Involves core set of partners and wider stakeholders who have co-designed the project and will deliver new or enhance existing services together.
- Is rooted in what the community themselves need.
- Fosters innovation.
- Increases third sector capacity building and sustainable growth.
- Will have a legacy of new services and activities, as well as a commitment to a new way of working together.

Underpinning everything is a fundamental goal to achieve better outcomes for individuals through collaboration.

## Challenges in Health, Wellbeing, Welfare and Social Care

### Challenges and Issues encountered by Third Sector

- Fragmented service delivery and development hinder cohesive solutions
- Collaboration and Co-production efforts often lack a robust foundation, making it challenging to design joint services.
- Short-term funding drives unsustainable services, group competition, and siloed working.
- Organisations face sustainability and planning challenges due to limited capacity, resources, and skills
- Weak third sector succession planning poses risks to governance stability and the continuity of local services.
- The third sector's influence on service delivery is limited by weak trust and relationships with the public sector

### Challenges and Issues encountered by Communities

- Geographical remoteness can add stress and hinder access to support and activities.
- Poor transport infrastructure is a cause of social isolation and a barrier to accessing services
- Poor connectivity and high costs are barriers to accessing service.
- Accessing information about services is challenging.
- Privacy (stigma) is an issue, as it can be limited in rural communities
- Factors such as poverty, isolation, addictions, and poor housing impact health and wellbeing
- Community-based support does not adequately address needs

Individual

Both the third sector and communities face significant barriers that impact service delivery and individual wellbeing. For the third sector, issues include fragmented services, weak collaboration, short-term funding, limited capacity, succession planning risks, and fragile relationships with the public sector. Communities struggle with geographical remoteness, poor transport and connectivity, high costs, limited access to information, stigma, and social factors such as poverty and isolation.

## How HWWS Collaboration Addresses Challenges

The HWWS Collaboration will tackle fragmented service delivery, funding insecurity, and limited capacity by creating a formal governance structure and partnership agreements. The Collaboration Forum will unite sectors to co-produce solutions, build trust, and share resources. Actions include a unified delivery plan, long-term funding, and capacity-building, fostering sustainable, person-centred services and reducing silo working.”

---

### Outcomes For the Community

- Improved access to services in Skye and Lochalsh.
- Increased wellbeing and resilience through regular, stigma-free support.
- Stronger community connections through shared spaces and peer support.
- Early identification of needs, reducing crisis interventions.
- Improved access to support through increased awareness.
- Greater inclusion and empowerment by involving communities in service design.

### Outcomes For the Third Sector

- Strengthened collaboration networks to address inequalities and foster innovation
  - Increased third sector capacity to deliver services that attract diverse funding
  - Enhanced relationships with public-sector commissioning and funding bodies
  - Strengthened governance and operational frameworks
  - A new lobbying body for better public-sector commissioning and funding strategies.
  - Third sector solutions will integrate with statutory services, shaping regional policy to meet rural and remote community needs.
- 

## HWWS Collaboration – Yearly Overview

### Year 1 (2024–2025): Research & Development

- Conducted research and mapped health, wellbeing, welfare, and social care services across Skye & Lochalsh
- Engaged communities to understand local needs and priorities
- Built strong relationships with public and third-sector partners to establish a collaborative framework
- Produced Skye and Lochalsh Third Sector Profile February 2025
- Held Skye and Lochalsh Third Sector Conference March 2025
- Established the Community Wellbeing and Support forum
- Visit <https://www.slcvo.org.uk/hwws-collaboration> for more information

### Year 2 (2025–2026): Design & Planning

- Driving co-design of services with communities and partners
- Strengthening cross-sector partnerships to support integrated delivery
- Undertaking feasibility studies and detailed project planning based on identified priorities
- Launched the Skye & Lochalsh Community Information Hub
- Produced the Skye and Lochalsh Wellbeing and Community Support Directory 2025–2027
- Published the Skye and Lochalsh Caring Communities Plan 2025–2030 September 25
- Visit <https://www.slcvo.org.uk/information-hub> for more information

### Years 3–5 (2026–2030): Delivery & Innovation

- Launch joint projects aligned with the Skye & Lochalsh Caring Communities Plan
- Focus on early intervention and innovative approaches to improve health and wellbeing
- Ensure equitable access to services for all, reducing rural isolation and inequalities
- Build resilient communities through holistic, inclusive, and sustainable models
- Secure funding to continue the HWWS Collaboration

# Skye & Lochalsh Caring Communities Plan 2025-2030

## Vision

A sustainable third sector health and social care system, where services are needs-led, prevention- focused, and supported by strong leadership, funding and capacity building

## Purpose

To transform collaboration across the third sector, communities and public sector in Skye and Lochalsh, addressing challenges in health, wellbeing, welfare and social care through inclusive, locally driven solutions.

## Strategic Priorities



### People and Communities

- Promote resilience through early intervention and innovation
- Improve equity and holistic wellbeing
- Empower communities with accessible information and support
- Ensure equitable access for rural and underserved groups
- Co-design services with lived experience and local voice



### A Strong Third Sector

- Build a skilled, sustainable workforce of staff and volunteers
- Foster shared learning, innovation and collaboration
- Support financial resilience and long-term funding models
- Strengthen communication and signposting across services



### Stronger Partnerships

- Co-design services with public sector and communities
- Embed third sector values in strategic planning
- Develop integrated, rights-based service solutions
- Align strategies across sectors for greater impact

## Further Information about S&L HWWS Collaboration

For more information visit [www.slcvo.org.uk/hwws-collaboration](http://www.slcvo.org.uk/hwws-collaboration)

Contact Jo-Anne Ford, SLCVO Chief Officer [jo.ford@slcvo.org.uk](mailto:jo.ford@slcvo.org.uk)

Document produced November 2025